

1 2 3 4 5 6 7 8

A

A

B

B

C

C

D

D

E

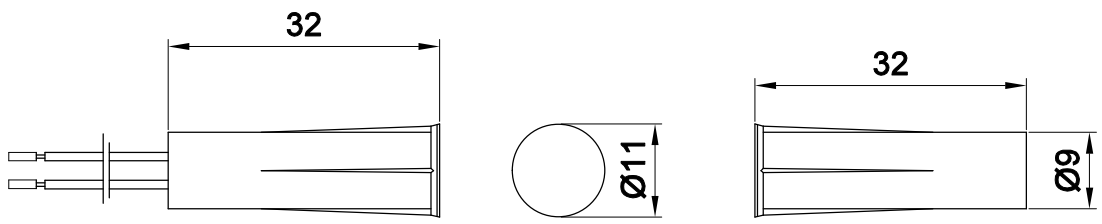
E

F

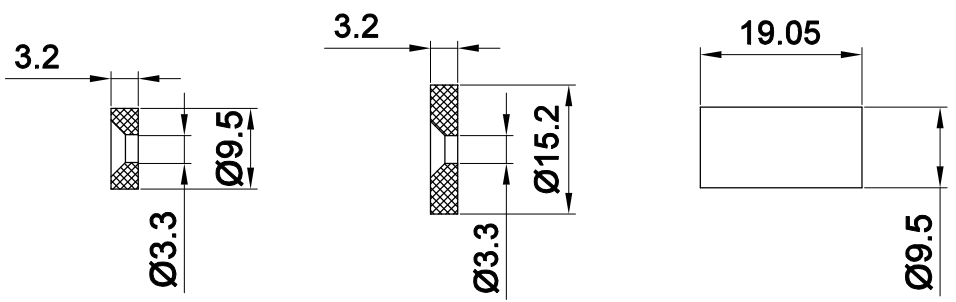
F

# FEATURES

- \* Screw mount or self adhesive
- \* Center leads with 22# 450±20mmUA length
- \* Longer leads on request
- \* Spacer available
- \* 2 Conductor jacket cable on request
- \* Switches or magnets available seperately
- \* Colors: White ,Brown,Grey



# SPECIFICATION



1. Loop Type.....Closed
2. Reed From.....N/O
3. Gap[Inch(mm)]..... 3/4(19)
4. Depature Gap[Inch(mm)](Ohm).....0.87(22)
5. Maximum LrniatContactResistance(Ohm).....0.15
6. Maximum ContactRating(VDC/VAC).....10
7. Maximum SwitchingVoltage(VDC/VAC).....100
8. Maximum SwitchingCurrent(A).....0.5

				<b>KEPO</b> NINGBO KEPO ELECTRONIC CO.,LTD <a href="http://www.chinaacoustic.com">http://www.chinaacoustic.com</a>	
No.	DESCRIPTION	APPROVED	DATE	Magnetic Contact Switches KP-1301MD-R NC	
TOLERANCES UNLESS NOTED OTHERWISE X ± XX ± XXX ± 50° FORMED ±0° ANGLES ±1°		APPROVALS	DATE		
FIRST ANGLE PROJECTION		DRAWN		UNIT	DWG NO.
		CHECKED		mm	<b>KP2.840.037.05</b>
		APPROVED	16.7.26	SCALE	SHEET
				NOT TO SCALE	VER 1.0

1 2 3 4 5 6 7 8