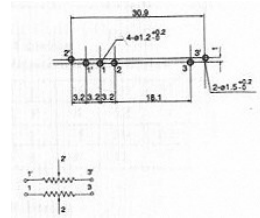
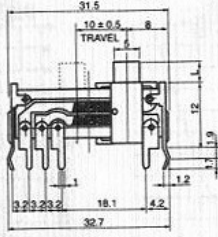
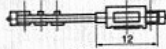
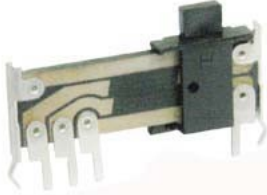


SLIDE POTENTIOMETER

Q-4525

F-102G

10mm, Stand Type, Dual Unit



SPECIFICATIONS

Electrical Characteristics

- Total Resistance 500Ω-1 MΩ
- Total Resistance Tolerance..... ±20%
- Resistance Taper..... A, B, C, D, See P109
- Sliding Noise Less than 100 mV at 20 mm/sec.
- Insulation Resistance More than 10 MΩ at DC 250V
- Withstand Voltage 1 minute at AC 250 V
- Residual Resistance..... Term. 1 ~ 2 : Less than 10 Ω
Term. 2 ~ 3 : Less than 10Ω
- Gang Error (Dual Unit)..... -40 dB ~ 0 dB ± 3 dB
- Rated Voltage
- Linear Taper B 10 mm, 15mm : AC 100V
20 mm, 25mm : AC 200V 30 mm : AC 250V
- OtherTapers 10 mm, 15mm : AC 50V
20 mm, 25mm : AC 150V 30 mm : AC 200V
- Rated Power (Single Unit/Dual Unit)
- Linear Taper B 10 mm, 15mm : 0.05 W / 0.025 W
20 mm, 25mm : 0.1 W / 0.05 W
30 mm : 0.2W / 0.1 W
- OtherTapers..... 10 mm, 15mm : 0.025 W / 0.012 W
20 mm, 25mm : 0.05 W / 0.025 W
30 mm : 0.1 W / 0.05 W

Mechanical Characteristics

- Operating Force 5 gt.cm - 200 gt.cm
- Center Detent Force 10 gt.cm - 400 gt.cm
- Stopper Strength..... 3.0 Kgf/cm Min
(from the base level to a point of 2 mm)
- Level Wobble..... 2(2xL) / 20 mm Max.
(L: Level length both sides)
- Level Push-Pull Strength..... 3.0 Kgf Min. at 5 sec.

Durability

- Rotational Life..... 10,000 Cycles