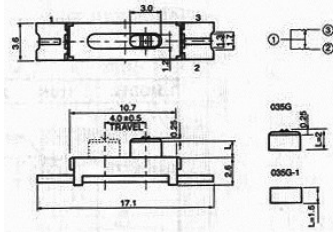


## SLIDE POTENTIOMETER

**Q-4520**

**F-035G**

4mm, Mini Type, Dual Unit,  
For Stereo Headphone use



### SPECIFICATIONS

#### Electrical Characteristics

- Total Resistance .....500Ω~ 1MΩ
- Total Resistance Tolerance ..... ±20%
- Resistance Taper. ....A,B,C,D, See P109
- Sliding Noise..... Lesse than 100 mV
- Insulation Resistance ..... 5 mm~15mm:More than 50 MΩ at DC 100V  
20 mm: More than 50 MΩ at DC 250V
- Withstand Voltage.....5mm~15mm:1 minute at AC 100V  
20 mm: 1 minute at AC 250V
- Residual Resistance ..... Term: 1-2: Less than 10Ω  
Term: 2-3: Less than 10Ω
- Gang Error (Dual Unit).....-40 dB~0dB±3dB
- Rated Voltage
- Linear Taper B.....4mm,5mm: AC 50V,  
10mm,15mm: AC 100V, 20mm: AC 200V
- Other Tapers ..... 5mm: AC 25V, 10mm, 15mm: AC 50V,  
20mm: AC 150V
- Rated Power (Single Unit/Dual Unit)
- Linear Taper B .....4mm,5mm:0.01W/0.005W  
10mm:0.03W/0.015W,15mm:0.05W/0.025W, 20mm:0.1W/-
- Other Tapers .....5mm:0.025W/0.012W, 10mm: 0.015W/0.01W  
15mm: 0.025W/0.01W, 20mm:0.05W/-

#### Mechanical Characteristics

- Operating Force ..... 20 gf.cm~200 gf.cm
- Click Slip-Out Force (only Center Click)
- Operating Force ..... 30 gf.cm~300 gf.cm
  - Stopper Strength .....2.50 Kgf/cm Min  
(from the base level to a point of 2 mm)
- Level Wobble .....2(2xL)/25mm Max. (L:Level length both sides)
- Level Push-Pull Strength ..... 1.0Kgf Min.at 10 sec.
- Rotational Life.....5,000 Cycles

#### Durability