

T CORE

| TYPE | FIG. | Dimensions(mm) | | |
|----------------|------|----------------|----------|----------|
| | | A | B | C |
| T4/2/1 | 1 | 4.0±0.3 | 2.0±0.3 | 1.0±0.3 |
| T4/2/2 | 1 | 4.0±0.3 | 2.0±0.3 | 2.0±0.3 |
| T6/3/3 | 1 | 6.0±0.3 | 3.0±0.3 | 3.0±0.3 |
| T8/4/4 | 1 | 8.0±0.3 | 4.0±0.3 | 4.0±0.3 |
| T8/5/3 | 1 | 8.0±0.3 | 5.0±0.3 | 3.0±0.2 |
| T9/5/3 | 1 | 9.0±0.3 | 5.0±0.3 | 3.0±0.2 |
| T10/5/5 | 1 | 10.0±0.3 | 5.0±0.3 | 5.0±0.3 |
| T10/6/2.8 | 1 | 10.0±0.3 | 6.0±0.3 | 2.8±0.2 |
| T10/6/3.5 | 1 | 10.0±0.3 | 6.0±0.3 | 3.5±0.2 |
| T10/6/4 | 1 | 10.0±0.3 | 6.0±0.3 | 4.0±0.2 |
| T10/6/5 | 1 | 10.0±0.3 | 6.0±0.3 | 5.0±0.3 |
| T12/6/4 | 1 | 12.0±0.4 | 6.0±0.3 | 4.0±0.3 |
| T12.7/7.9/6.35 | 1 | 12.7±0.4 | 7.92±0.3 | 6.35±0.3 |
| T13/6/7 | 1 | 13.0±0.4 | 6.0±0.3 | 7.0±0.3 |
| T13/7/5 | 1 | 13.0±0.4 | 7.0±0.3 | 5.0±0.3 |
| T14/8/7 | 1 | 14.0±0.4 | 8.0±0.3 | 7.0±0.3 |
| T14/9/5 | 1 | 14.0±0.4 | 9.0±0.3 | 5.0±0.3 |
| T14.6/10.5/3.7 | 1 | 14.6±0.3 | 10.5±0.3 | 3.7±0.3 |
| T16/8/5 | 1 | 16.0±0.3 | 8.0±0.3 | 5.0±0.3 |
| T16/9/5 | 1 | 16.0±0.3 | 9.0±0.3 | 5.0±0.3 |
| T16/10/7 | 1 | 16.0±0.4 | 10.0±0.3 | 7.0±0.3 |
| T16/12/8 | 1 | 16.0±0.3 | 12.0±0.3 | 8.0±0.3 |
| T18/10/6.35 | 1 | 18.0±0.4 | 10.0±0.3 | 6.35±0.3 |
| T18/10/10 | 1 | 18.0±0.4 | 10.0±0.3 | 10.0±0.3 |
| T19/11/10 | 1 | 19.0±0.4 | 11.0±0.3 | 10.0±0.3 |
| T19/13/11 | 1 | 19.0±0.4 | 13.0±0.3 | 11.0±0.3 |
| T20/10/7 | 1 | 20.0±0.4 | 10.0±0.3 | 7.0±0.3 |
| T20/10/10 | 1 | 20.0±0.4 | 10.0±0.3 | 10.0±0.3 |
| T20/12/10 | 1 | 20.0±0.4 | 12.0±0.4 | 10.0±0.3 |
| T22/14/6.35 | 1 | 22.0±0.6 | 14.0±0.6 | 6.35±0.3 |
| T22/14/8 | 1 | 22.0±0.4 | 14.0±0.4 | 8.0±0.3 |
| T22/14/10 | 1 | 22.0±0.4 | 14.0±0.4 | 10.0±0.3 |

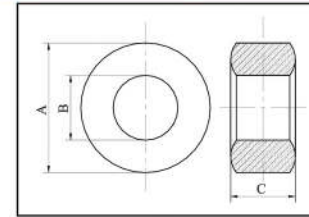
T CORE

FIG.1

| Cl (mm ²) | Ae (mm ²) | Le (mm) | Ve (mm ³) | AL ± 30% (nH/N ²) | | | | Weight g/PCS |
|--------------------------|--------------------------|------------|--------------------------|-------------------------------|------|------|-------|-----------------|
| | | | | FW40 | FWSK | FW7K | FW10K | |
| 9.06 | 0.96 | 8.71 | 8.4 | 320 | | | | 0.06 |
| 4.53 | 1.92 | 8.71 | 16.7 | 630 | 1500 | 2050 | 2750 | 0.10 |
| 3.02 | 4.32 | 13.07 | 56.5 | 1000 | 2250 | 3150 | 4200 | 0.32 |
| 2.27 | 7.69 | 17.42 | 133.9 | 1300 | 3050 | 4150 | 5550 | 0.75 |
| 4.53 | 4.50 | 20.41 | 91.85 | 640 | 1500 | 1950 | 2770 | 0.45 |
| 3.66 | 6.00 | 22.00 | 132 | 850 | 1900 | 2600 | 3500 | 0.60 |
| 1.88 | 12.50 | 23.50 | 294 | 1530 | 3600 | 4660 | 6660 | 1.40 |
| 4.48 | 5.60 | 25.12 | 141 | 650 | 1550 | 1960 | 2800 | 0.60 |
| 3.59 | 7.00 | 25.12 | 175.84 | 800 | 1930 | 2450 | 3500 | 0.73 |
| 3.14 | 8.00 | 25.12 | 200 | 920 | 2200 | 2800 | 4000 | 0.90 |
| 2.51 | 10.00 | 25.12 | 251.2 | 1200 | 2800 | 3800 | 5100 | 1.00 |
| 2.35 | 12.00 | 28.26 | 339 | 1220 | 2900 | 3800 | 5100 | 1.60 |
| 2.13 | 15.17 | 31.20 | 491 | 1440 | 3300 | 4500 | 6000 | 2.30 |
| 1.21 | 24.50 | 29.83 | 730 | 2400 | 5700 | 7250 | 10300 | 3.60 |
| 2.09 | 15.00 | 31.40 | 471 | 1380 | 3300 | 4200 | 6000 | 2.30 |
| 1.64 | 21.00 | 34.54 | 725 | 1760 | 3900 | 5460 | 7000 | 3.40 |
| 2.89 | 12.50 | 36.10 | 452 | 1060 | 2400 | 3300 | 4400 | 2.10 |
| 5.19 | 7.58 | 39.41 | 298 | 550 | 1330 | 1700 | 2400 | 1.50 |
| 1.88 | 20.00 | 37.68 | 754 | 1660 | 3800 | 5200 | 6900 | 3.50 |
| 2.24 | 17.50 | 39.25 | 686.87 | 1290 | 2800 | 3920 | 5600 | 3.20 |
| 1.94 | 21.00 | 40.82 | 857.22 | 1480 | 3230 | 4523 | 6450 | 4.10 |
| 2.75 | 16.00 | 43.96 | 703 | 1100 | 2500 | 3500 | 4600 | 3.40 |
| 1.73 | 25.40 | 43.96 | 1116.58 | 1800 | 4100 | 5600 | 7500 | 5.30 |
| 1.1 | 40.00 | 43.96 | 1758.4 | 2800 | 6500 | 8800 | 11800 | 8.30 |
| 1.18 | 40.00 | 47.10 | 1884 | 2450 | 5860 | 7460 | 10660 | 9.10 |
| 1.52 | 33.00 | 50.24 | 1657.92 | 1900 | 4550 | 5800 | 8300 | 7.98 |
| 1.34 | 35.00 | 47.10 | 1648.5 | 2150 | 5150 | 6550 | 9340 | 8.00 |
| 0.942 | 50.00 | 47.10 | 2355 | 3300 | 6930 | 9200 | 13860 | 11.50 |
| 1.25 | 40.00 | 50.24 | 2009 | 2300 | 5500 | 7000 | 10000 | 9.80 |
| 2.32 | 23.60 | 54.71 | 1290 | 1200 | 3150 | 4300 | 5700 | 6.60 |
| 1.76 | 32.00 | 56.52 | 1808.64 | 1700 | 4000 | 5000 | 7200 | 8.80 |
| 1.41 | 40.00 | 56.52 | 2260.8 | 2100 | 5000 | 6300 | 9000 | 10.50 |

T CORE

| TYPE | FIG. | Dimensions(mm) | | |
|--------------|------|----------------|----------|----------|
| | | A | B | C |
| T22/14/12.7 | 1 | 22.0±0.4 | 14.0±0.4 | 12.7±0.3 |
| T25/15/10 | 1 | 25.0±0.4 | 15.0±0.4 | 10.0±0.3 |
| T25/15/12 | 1 | 25.0±0.4 | 15.0±0.4 | 12.0±0.3 |
| T25/15/13 | 1 | 25.0±0.4 | 15.0±0.4 | 13.0±0.3 |
| T25/15/15 | 1 | 25.0±0.6 | 15.0±0.6 | 15.0±0.4 |
| T26/14.5/20 | 1 | 26.0±0.5 | 14.5±0.4 | 20.0±0.4 |
| T28/12.4/7.6 | 1 | 28.0±0.4 | 12.4±0.3 | 7.6±0.3 |
| T28/16/16 | 1 | 28.0±0.4 | 16.0±0.4 | 16.0±0.3 |
| T28/18/13 | 1 | 28.0±0.4 | 18.0±0.4 | 13.0±0.3 |
| T29/18/15 | 1 | 29.0±0.5 | 18.0±0.4 | 15.0±0.3 |
| T29/19/15 | 1 | 29.0±0.5 | 19.0±0.4 | 15.0±0.3 |
| T31/19/13 | 1 | 31.0±0.5 | 19.0±0.5 | 13.0±0.4 |
| T31/19/15 | 1 | 31.0±0.5 | 19.0±0.5 | 15.0±0.4 |
| T31/20/15 | 1 | 31.0±0.5 | 20.0±0.4 | 15.0±0.4 |
| T34/21.8/21 | 1 | 34.0±0.6 | 21.8±0.6 | 21.0±0.4 |
| T36/23/15 | 1 | 36.0±0.5 | 23.0±0.5 | 15.0±0.4 |
| T38/19/13 | 1 | 38.0±0.5 | 19.0±0.5 | 13.0±0.4 |
| T38/23/15 | 1 | 37.0±0.5 | 23.0±0.5 | 15.0±0.4 |
| T38/19/15 | 1 | 38.0±0.5 | 19.0±0.5 | 15.0±0.4 |
| T38/19/21 | 1 | 38.0±0.5 | 19.0±0.5 | 21.0±0.4 |
| T38/20.5/15 | 1 | 38.0±0.5 | 20.5±0.5 | 15.0±0.4 |
| T38/22/15 | 1 | 38.0±0.5 | 22.0±0.5 | 15.0±0.4 |
| T38/25/15 | 1 | 38.0±0.5 | 25.0±0.5 | 15.0±0.4 |
| T40/23/20 | 1 | 40.0±0.8 | 23.0±0.6 | 20.0±0.5 |
| T40/25/20 | 1 | 40.0±0.8 | 25.0±0.6 | 20.0±0.5 |
| T42/26/18 | 1 | 42.0±0.8 | 26.0±0.6 | 18.0±0.6 |
| T45/26/12 | 1 | 45.0±0.5 | 26.0±0.3 | 12.0±0.3 |
| T45/30/15 | 1 | 45.0±0.8 | 30.0±0.6 | 15.0±0.4 |
| T47/27/15 | 1 | 47.0±0.8 | 27.0±0.6 | 15.0±0.4 |
| T48/30/10 | 1 | 48.0±1.0 | 30.0±0.5 | 10.0±0.3 |
| T48/30/15 | 1 | 48.0±1.0 | 30.0±0.5 | 15.0±0.4 |
| T49/31/15 | 1 | 49.0±0.6 | 31.0±0.6 | 15.0±0.4 |

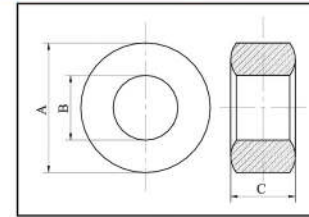
T CORE

FIG.1

| Cl (mm ²) | Ae (mm ²) | Le (mm) | Ve (mm ³) | AL ± 30% (nH/N ²) | | | | Weight g/PCS |
|--------------------------|--------------------------|------------|--------------------------|-------------------------------|-------|-------|-------|-----------------|
| | | | | FW40 | FWSK | FW7K | FW10K | |
| 1.11 | 50.80 | 56.52 | 2871 | 3000 | 7800 | 9200 | 11500 | 13.60 |
| 1.25 | 50.00 | 62.80 | 3140 | 2200 | 5400 | 7500 | 9200 | 14.80 |
| 1.04 | 60.00 | 62.80 | 3768 | 2900 | 6700 | 9200 | 12000 | 17.50 |
| 0.96 | 65.00 | 62.80 | 4082 | 3200 | 7300 | 10000 | 13300 | 19.00 |
| 0.82 | 73.39 | 60.18 | 4416.6 | 3500 | 8400 | 11500 | 15300 | 23.00 |
| 0.55 | 115.00 | 63.58 | 7312.2 | 5250 | 11700 | 16300 | 23000 | 33.00 |
| 1.21 | 24.50 | 29.83 | 730 | 2400 | 5400 | 7250 | 10300 | 23.00 |
| 0.72 | 96.00 | 69.08 | 6631.68 | 4600 | 8950 | 12500 | 17900 | 31.00 |
| 1.11 | 65.00 | 72.22 | 4694.3 | 3000 | 5500 | 7600 | 11000 | 23.00 |
| 0.89 | 82.50 | 73.79 | 6087 | 3200 | 7700 | 9800 | 14000 | 29.00 |
| 1.00 | 75.00 | 75.36 | 5652 | 2870 | 6800 | 9000 | 12000 | 27.20 |
| 1.00 | 78.00 | 78.50 | 6123 | 2800 | 7000 | 8800 | 12700 | 29.50 |
| 0.87 | 90.00 | 78.50 | 7065 | 3700 | 7800 | 11200 | 13600 | 34.00 |
| 0.97 | 82.50 | 80.07 | 6605.7 | 3000 | 5900 | 9000 | 12000 | 31.70 |
| 0.68 | 128.10 | 87.60 | 11222 | 4230 | 10100 | 12850 | 18360 | 55.00 |
| 0.95 | 97.50 | 92.63 | 9032 | 3200 | 7400 | 9300 | 13500 | 44.00 |
| 0.722 | 123.50 | 89.49 | 11052 | 4000 | 9500 | 12100 | 17300 | 52.50 |
| 0.89 | 105.00 | 94.20 | 9891 | 3220 | 7700 | 9800 | 14000 | 48.50 |
| 0.628 | 142.50 | 89.49 | 12752 | 4600 | 11000 | 14000 | 20000 | 60.00 |
| 0.448 | 199.50 | 89.49 | 17853 | 6440 | 15400 | 19600 | 28000 | 85.00 |
| 0.7 | 131.00 | 91.80 | 12054 | 4140 | 9900 | 12600 | 18000 | 58.00 |
| 0.785 | 120.00 | 94.20 | 11304 | 3680 | 8800 | 11200 | 16000 | 55.00 |
| 1.01 | 97.50 | 98.90 | 9643 | 2850 | 6800 | 8666 | 12380 | 46.30 |
| 0.581 | 170.00 | 98.90 | 16814.7 | 5000 | 11800 | 15100 | 21500 | 81.00 |
| 0.68 | 150.00 | 102.00 | 15307 | 4240 | 10150 | 12920 | 18450 | 73.50 |
| 0.741 | 144.00 | 106.76 | 15373 | 3896 | 9317 | 11858 | 16941 | 74.00 |
| 0.978 | 114.00 | 111.00 | 12707 | 2568 | 6428 | 8285 | 12585 | 61.00 |
| 1.046 | 112.50 | 117.75 | 13246.8 | 2760 | 6600 | 8400 | 12000 | 64.00 |
| 0.77 | 150.00 | 116.18 | 17427 | 3730 | 8900 | 11350 | 16210 | 84.00 |
| 1.36 | 90.00 | 122.46 | 11021 | 2130 | 5070 | 6500 | 9230 | 55.00 |
| 0.91 | 135.00 | 122.46 | 16532 | 3400 | 7800 | 10600 | 14000 | 79.00 |
| 0.93 | 135.00 | 125.60 | 16696 | 3100 | 7430 | 9500 | 13500 | 81.00 |

T CORE

| TYPE | FIG. | Dimensions(mm) | | |
|-------------|------|----------------|-----------|----------|
| | | A | B | C |
| T49/31/19 | 1 | 49.0±0.6 | 31.0±0.6 | 18.8±0.3 |
| T49/31.8/19 | 1 | 49.0±0.6 | 31.8±0.6 | 18.8±0.3 |
| T49/33.8/19 | 1 | 49.0±0.6 | 33.8±0.6 | 18.8±0.3 |
| T50/25/20 | 1 | 50.0±1.0 | 25.0±0.6 | 20.0±0.6 |
| T51/31/13 | 1 | 51.0±1.0 | 31.0±0.8 | 13.0±0.4 |
| T56/32/18 | 1 | 56.0±1.0 | 32.0±1.0 | 18.0±0.6 |
| T56/36/20 | 1 | 56.0±1.0 | 36.0±1.0 | 20.0±0.6 |
| T58/40/18 | 1 | 58.0±1.5 | 40.0±1.0 | 18.0±0.6 |
| T60/38/20 | 1 | 60.0±1.5 | 38.0±1.0 | 20.0±0.6 |
| T60/40/20 | 1 | 60.0±1.5 | 40.0±1.0 | 20.0±0.6 |
| T63/38/12.7 | 1 | 63.0±1.0 | 38.0±1.0 | 12.7±0.5 |
| T63/38/25 | 1 | 63.0±1.5 | 38.0±1.0 | 25.0±0.8 |
| T68/44/15 | 1 | 68.0±1.5 | 44.0±0.8 | 15.0±0.8 |
| T74/40/13 | 1 | 74.0±1.5 | 40.0±1.0 | 13.0±0.4 |
| T80/50/20 | 1 | 80.0±1.5 | 50.0±1.0 | 20.0±0.8 |
| T87/54/14 | 1 | 87.0±2.0 | 54.0±2.0 | 14.0±0.5 |
| T87/54/30 | 1 | 87.0±2.0 | 54.0±2.0 | 30.0±1.0 |
| T89/60/20 | 1 | 89.0±0.7 | 60.0±0.5 | 20.0±0.5 |
| T100/50/20 | 1 | 100.0±1.2 | 50.0±0.9 | 20.0±0.4 |
| T102/55/15 | 1 | 102.0±1.5 | 55.0±0.7 | 15.0±0.3 |
| T102/55/20 | 1 | 102.0±1.5 | 55.0±0.8 | 20.0±0.5 |
| T102/66/15 | 1 | 102.0±2.0 | 66.0±2.0 | 15.0±0.6 |
| T102/65/20 | 1 | 102.0±1.5 | 65.0±0.8 | 20.0±0.5 |
| T124/60/40 | 1 | 124.0±2.5 | 60.0±1.5 | 40.0±0.5 |
| T132/100/27 | 1 | 132.0±3.0 | 100.0±2.5 | 27.0±0.5 |
| T140/65/20 | 1 | 140.0±3.0 | 65.0±1.0 | 20.0±0.5 |
| T150/110/27 | 1 | 150.0±3.0 | 110.0±3.0 | 27.0±0.5 |
| T154/80/45 | 1 | 154.0±2.5 | 80.0±1.5 | 45.0±0.5 |

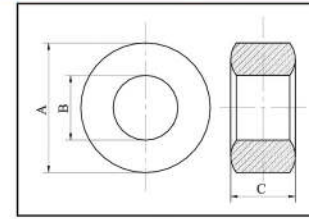
T CORE

FIG.1

| Cl (mm ²) | Ae (mm ²) | Le (mm) | Ve (mm ³) | AL±30%(nH/N ²) | | | | Weight g/PCS |
|--------------------------|--------------------------|------------|--------------------------|----------------------------|-------|-------|-------|-----------------|
| | | | | FW40 | FWSK | FW7K | FW10K | |
| 0.735 | 171.00 | 125.60 | 21477 | 3950 | 7800 | 11900 | 17100 | 96.00 |
| 0.77 | 163.40 | 126.80 | 20728 | 3950 | 7800 | 11900 | 17100 | 96.00 |
| 0.9 | 144.40 | 130.00 | 18771 | 3200 | 7670 | 9765 | 13950 | 90.00 |
| 0.471 | 250.00 | 117.75 | 29437.5 | 6133 | 14666 | 18666 | 26666 | 141.30 |
| 0.99 | 130.00 | 128.74 | 16736 | 2900 | 6900 | 9000 | 12600 | 83.00 |
| 0.639 | 216.00 | 138.16 | 29842 | 4500 | 10800 | 13500 | 19600 | 143.00 |
| 0.575 | 240.00 | 138.16 | 33158.4 | 2300 | 9500 | 12100 | 17300 | 136.00 |
| 1.0 | 144.00 | 150.70 | 21703 | 3050 | 7200 | 9250 | 13200 | 120.00 |
| 0.7 | 220.00 | 153.80 | 33849 | 4130 | 9870 | 12560 | 17950 | 162.00 |
| 0.785 | 200.00 | 157.00 | 31400 | 3680 | 8800 | 11200 | 16000 | 150.00 |
| 0.99 | 158.75 | 158.57 | 25172 | 2900 | 6840 | 8800 | 12500 | 106.00 |
| 0.5 | 312.50 | 158.57 | 59553 | 6500 | 15500 | 19800 | 28300 | 236.00 |
| 0.976 | 180.00 | 175.84 | 31651.2 | 2950 | 7000 | 9000 | 12800 | 165.00 |
| 0.809 | 221.00 | 178.98 | 39554 | 3550 | 8500 | 10800 | 15500 | 188.00 |
| 0.68 | 300.00 | 204.10 | 61230 | 4250 | 10100 | 12900 | 18000 | 300.00 |
| 0.958 | 231.00 | 221.30 | 51136 | 3000 | 7200 | 9000 | 13000 | 238.00 |
| 0.45 | 495.00 | 221.37 | 109578 | 6450 | 15000 | 19500 | 28000 | 513.00 |
| 0.806 | 290.00 | 233.00 | 67839 | 3116 | 7790 | 9580 | 15580 | 325.00 |
| 0.471 | 500.00 | 235.50 | 117750 | 6100 | 14600 | 18600 | 26600 | 560.00 |
| 0.699 | 352.00 | 246.00 | 86887 | 3750 | 9000 | 11500 | 18000 | 417.00 |
| 0.524 | 470.00 | 246.00 | 115850 | 5000 | 12000 | 15500 | 24000 | 556.00 |
| 0.977 | 270.00 | 263.76 | 71215 | 2950 | 7000 | 9000 | 12500 | 336.00 |
| 0.708 | 370.00 | 262.00 | 97010 | 3600 | 8800 | 11000 | 17600 | 465.00 |
| 0.225 | 1280.00 | 289.00 | 369766 | 11500 | 27500 | 35000 | 55000 | 1770.00 |
| 0.843 | 432.00 | 364.00 | 157351 | 3000 | 7500 | 9500 | 15000 | 755.00 |
| 0.429 | 750.00 | 321.00 | 241387 | 6000 | 14700 | 19000 | 29400 | 1150.00 |
| 0.755 | 540.00 | 408.00 | 220428 | 3400 | 8300 | 10500 | 16600 | 1058.00 |
| 0.22 | 1665.00 | 367.00 | 611687 | 11700 | 28000 | 36000 | 56000 | 2930.00 |