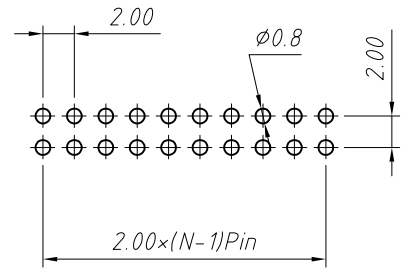
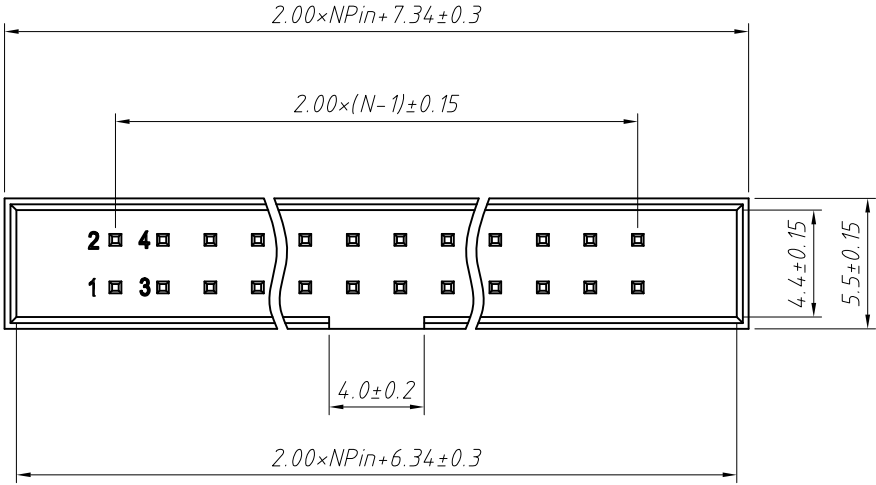


1  
RoHS Compliance

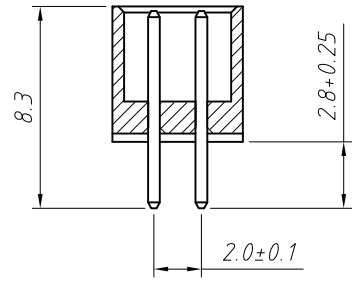
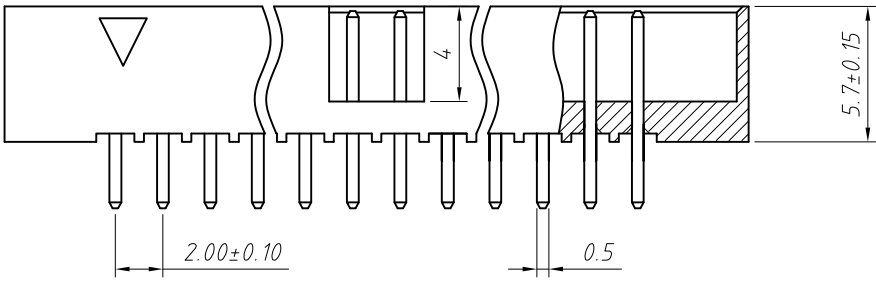


Material:  
Housing: PA6T, UL94V-0  
Contact: Brass  
Plating: Gold plated

Electrical Characteristics:  
Rated Current: 1.5AMP  
Contact Resistance: 20mΩ Max  
Withstand Voltage: 400V AC/DC  
Insulator Resistance: 800MΩ Min

Recommended P.C.B Layout (Top Side)  
(PCB BOARD TOLERANCE ±0.05)

Mechanical  
Operating Temperature: -40°C ~ +105°C  
Max. Processing Temp: 230°C for 30-60 seconds (260°C for 10 seconds)



Order Information:  
L-KLS1-202B-XX-S-B-□  
L: RoHS  
Box Header Series  
202B: 2.00mm Pitch  
XX-No. of 06 ~ 64 pin  
Type: S-Straight pin  
R-Right Angle Pin T-SMT  
Color: B-Black G-Gray  
Material: NONE=PA6T  
A=PBT C=LCP

ANGLE TOLERANCE	PROJECTION	Description:	
±3°		2.00mm Pitch Box Header Connector	
GENERAL TOLERANCE	UNITS	mm	KLS P/N:
x.x ±0.30	SHEET SIZE	A4	L-KLS1-202B-XX-S-B-□
x.xx ±0.20	Draw:	Daniel	2018-07-10
x.xxx ±0.10	Check:	Daniel	2018-07-10

